

*VERY LOW COST, HIGH QUALITY BROADCAST MONITOR*

# **BPM SERIES**

3G HD-SDI Broadcast monitor with dual displays and ethernet control capability



**DUAL DISPLAYS WITH TWO 3G SDI SIGNAL SIMULTANEOUSLY  
SUPERIOR PICTURE QUALITY AND NARROW BEZEL DESIGN**

**BREXEL**

[www.brexel.tv](http://www.brexel.tv)



# BPM SERIES KEY FEATURE

VERY LOW COST , HIGH QAULTY BROADCAST MONITOR

DUAL DISPLAYS WITH TWO 3G SDI SIGNAL SIMULTANEOUSLY

SUPERIOR PICTURE QUALITY AND NARROW BEZEL DESIGN

EAST TO USE CALIBRATION AND WALL CONTROL S/W VIA ETHERNET

## BREXEL PROFESIONAL MONITOR SERIES



BPM-119-3G  
19" 1366 x 768  
TRUE 8 Bit A GRADE LED Panel



BPM-123-3G,  
FULL HD 23" 1920 x1080  
True 8 Bit A GRADE LED Panel



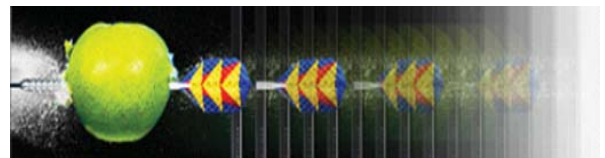
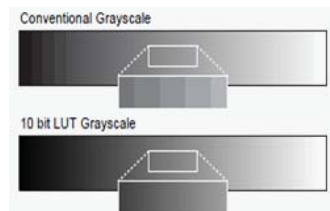
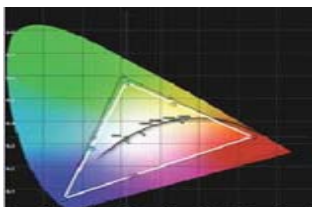
BPM-132-3G,  
FULL HD 32" 1920 x 1080  
True 10 Bit A Grade Panel

## DESCRIPTIONS

BPM Series consists of high quality HD LCD monitors, specifically designed for use in Broadcast environment ensuring accurate color reproduction in accordance with SMPTE, EBU, REC 709 Broadcast Standards.

The standard calibration feature enables gamma, color temperature and white luminance level adjustments to meet all Broadcast and medical standards. The BPM series calibration tool provides 8 bit look up table (LUT) (256 Step of grays cale) and 10 bit look up table (LUT) (1024 steps of grayscale).

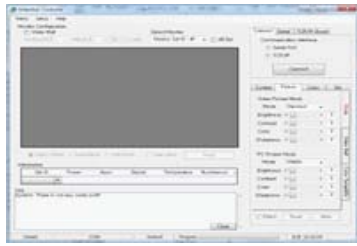
BPM Series is smoother images with unprecedented picture quality, no matter how fast the images are moving.



## MAIN FEATURE

- FIRMWARE UPDATE AND REMOTE CONTROL FOR ALL MENU BUTTONS VIA ETHERNET WITH VIDEO WALL CONTROL S/W
- 3G HD-SDI DUAL DISPLAYS CAPABILITY (POP, PIP)
- 3G DUAL SDI INPUT / OUTPUT, HDMI, DVI-D, COMPOSITE, COMPONENT, S-VIDEO AND VGA INPUT.
- I/P MODE SELECTION (INTER-FIELD, FIELD MERGE, LINE DOUBLER MODE)
- 3G HD-SDI SMPTE STANDARD SIGNAL FORMATS  
SMPTE-425M 1920x1080p(50/60)  
SMPTE-274M 1920x1080i(50/60), 1920x1080p(24/25/30)  
SMPTE-296M 1280x720p(50/59,94/60)  
SMPTE-125M (480i/59.94), ITU-BT60(576i/50)
- MARKER, EBU MARKER, USER MARKER,BLUE, MONO MODE
- UMD DISPLAY (TSL TALLY)
- GAMMA : 1.8~3.0 SETTING VALUE(COLOR TEMPERATURE: 3200K,5400K,6500K,9300K,11000K, USER)
- OEM/ODM AVAILABLE
- FREEWARE AUTO CALIBRATION TOOL
- BRIGHTNESS ADJUSTMENT THROUGH CALIBRATION S/W
- ACURRATE COLOR REPRODUCTION AND PRECISION IMAGING BASED ON EBU-3320 BROADCAST STANDARD
- STANDARD COLOR TEMPERATURE & GAMMA ALIGNMENT
- INFINITE BLACK LEVEL(LESS 0.25cd/m2), EXCELLENT UNIFORMITY
- UNDER, OVER, SCAN, ZOOM MODE
- ENGLISH, GERMAN,SPANISH, DUTCH, FRENCH
- INTERNAL TEST PATTERN MODE 100 % Color Bars, 75% Color Bars, Luma, RGB, White, Black, LED, Blue, Green, Red)
- MAXIMUM CONTRAST
- VESA OR STAND MOUNT / RACK MOUNT AVAILABLE
- CONTINUOUS OPERATION 24 HOURS /7
- 5 LANGUAGE MENU (ENGLISH, SPANISH, GERMANY, FRENCH, ITALIAN, PORTUGUESE)
- UPDATE FIRMWARE AND REMOTE CONTROL VIA ETHERNET (SIMULTANEOUSLY FIRMWARE UPDATE-100 MONITORS)

## WALL CONTROL S/W VIA ETHERNET



Wall control system is designed to control, operate and update firmware for multiple monitors remotely, i.e users can control remotely all features and functionalities of one or multiple monitors over Ethernet or Serial RS 232.

## AUTO CALIBRATION FUNCTION



BPM series offers auto calibration functionality using Freeware tool. All monitors run through an intensive and full calibration process. BPM series offers accurate luminance uniformity levels and confirm with SMPTE-C, EBU-3325 and REC 709 color space standards

## GAMMA AND COLOR ADJUSTMENT



BPM Series can adjust Gamma values 1.8~3.0 with auto calibration software using Eyeone, K-10, Minolta CA-210, CA-310 or JETI PROBE. Gamma Setting Value: 1.8~3.0  
Gamma Setting Color Temperature Mode: 3200K, 5400K, 6500K, 9300K, 11000K, User

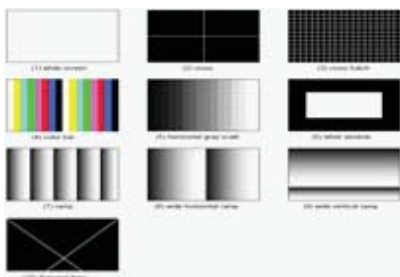
## DE-INTAERLACING AND SCALING TECHNOLOGY



BPM series is equipped with Cutting edge De-Interlacing and Scaling Technology using Motion Adaptive De-Interlacing. This high motion detection accuracy technology greatly improves image quality for both static and fast moving objects. Hardware architecture is very flexible suited to quick site installation

## INTERNAL PATTERN TEST MODE

Various Internal Test Patterns are available through OSD menu. (100 % Color Bars, 75% Color Bars, Luma, RGB, White, Black, LED, Blue, Green, Red)

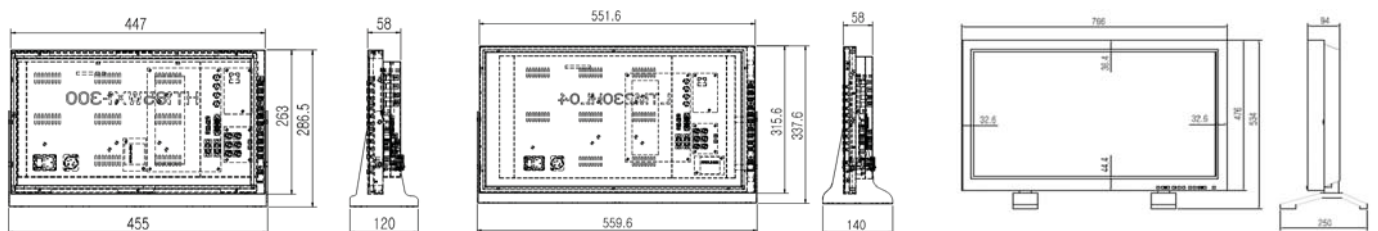


## PBP/PIP, FREEZE, ZOOM WITH TWO INPUTS

These functions are available with two video side-by-side and picture in picture.



## MECHANICAL DIMENSION



# BPM SERIES

BPM-119-3G(19")



BPM-123-3G(23")



BPM-132-3G(32")



Input	1 x HDMI	HDMI In (With HDCP), 19 Pin Female		
	1 x DVI	DVI In, 24 Pin Female		
	2 x HD-SD	3G HD/SD-SDI Two Inputs		
	1 x D-Sub	RGBHV (VGA) In, 15 Pin Female		
	2 x 9 PIN D-Sub	RS-232 In./Out, 9 Pin Male		
	3 x BNC	Component In (Y, Pb, Pr)		
	2 x BNC	S-Video In (Y,C)		
	1 x BNC	Composite In (CVBS)		
Output	2 HD/SD-SDI	3G HD/SD-SDI Two Outputs		
Input Signal	DVI	640 x 480 up to 1920 x 1080		
	HDMI	640 x 480 up to 1920 x 1080		
	PC-RGB	640 x 480 up to 1920 x 1080, SOG sync support		
	HD-SDI	3G Signal (LEVEL A)		
Analog Input Spec.	Composite	1.0Vp-p (With Sync)		
	S-Video	Y: 1.0Vp-p, C : 0.7Vp-p		
	Component	Y: 1.0Vp-p, Pb : 0.7Vp-p, Pr : 0.7Vp-p		
	D-Sub	1.0Vpp (With Sync)		
I/O Port	Ethernet Port	RJ-45 8 Pin Ethernet Port, 100Mbps, LAN to Serial Support for Wall control Application Firmware Update.		
	Serial Update	9Pin D-sub, Remote, Update, Serial Interface		
DVI,VGA,HDMI Input Signal Format		VESA Standard 1920 x 1080 (60P,60i,50i) 1920 x 1080 (30P,25P,24P)		
Color Coordinate	Color space	EBU,SMPTE-C,IBT-709, NTSC, Native		
LCD	Size	19" LED PANEL	23" LED PANEL	32" EEFL PANEL
	Resolution	1366 X 768 (16:9)	1920 X 1080 (16:9)	1920 X 1080 (16:9)
	Pixel Pitch	0.3 (H) x 0.3 (V)mm	0.2655 (H) x 0.2655 (V) mm	0.36375 (H) x 0.36375 (V)mm
	Color	16.7M Colors	16.7M Colors	1.06 Billion Colors
	Viewing Angle(deg)	R/L:178, U/D:178	R/L:178, U/D:178	R/L:178, U/D:178
	Luminance of White	250 cd/m <sup>2</sup>	250 cd/m <sup>2</sup>	500 cd/m <sup>2</sup>
	Contrast	1000 : 1	1000 : 1	1000 : 1
	Response Time	5.5 msec	10 msec	8 msec
	Display Area	430.4 x 254.6 x 10.9 mm	509.76 x 286.74 mm	698.4 x 392.85 mm
	Power Requirements	AC100-230V,50/60Hz		
ATC for Reliability	Automatic Temperature Control 80 x 25mm BLDC Cooling Fan x 2 pcs			
Operating Temperature and Humidity	0°C ~40°C(32°F~104°F) ,20% ~ 80% RH			
Weight	9 kg	11kg	35kg	
Dimension(W*H*D)without Box & Stand	447 x 263 x 58 mm	551 mm x 315 mm x 58 mm	766 x 476 x 94 mm	
Accessory	Power Cord , Stand or Wall Bracket			



Brexel has been established since 2007 and is a global leading manufacturer and supplier of HD broadcast equipments. Our company' major range of products and solutions include Virtual studio, Medical Monitor, Video Wall Monitor, Low Cost Broadcast Monitor and Quad splitter.

CONTACT TO BREXEL.

WEBSITE : [www.brexel.tv](http://www.brexel.tv)  
 MAIL TO : [overseas@brexel.co.kr](mailto:overseas@brexel.co.kr)  
 TEL : +82-70-8264-0334 / +82-862-3334  
 SUITE : 610 WorldMerdiang #2, 426-5 Gasan-dong,  
 Guemcheon-Gu, Seoul, Korea

DISTRIBUTED BY

